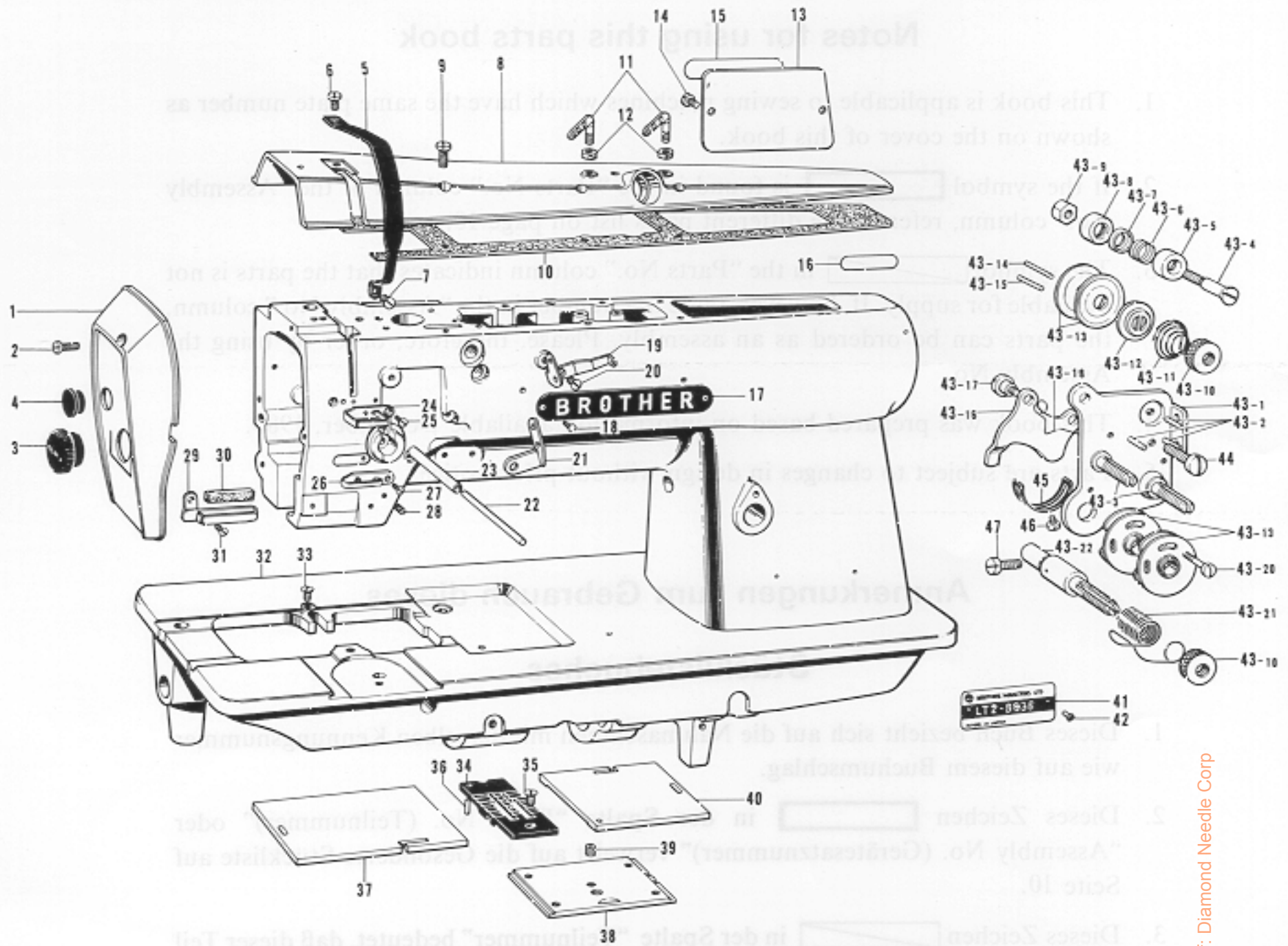


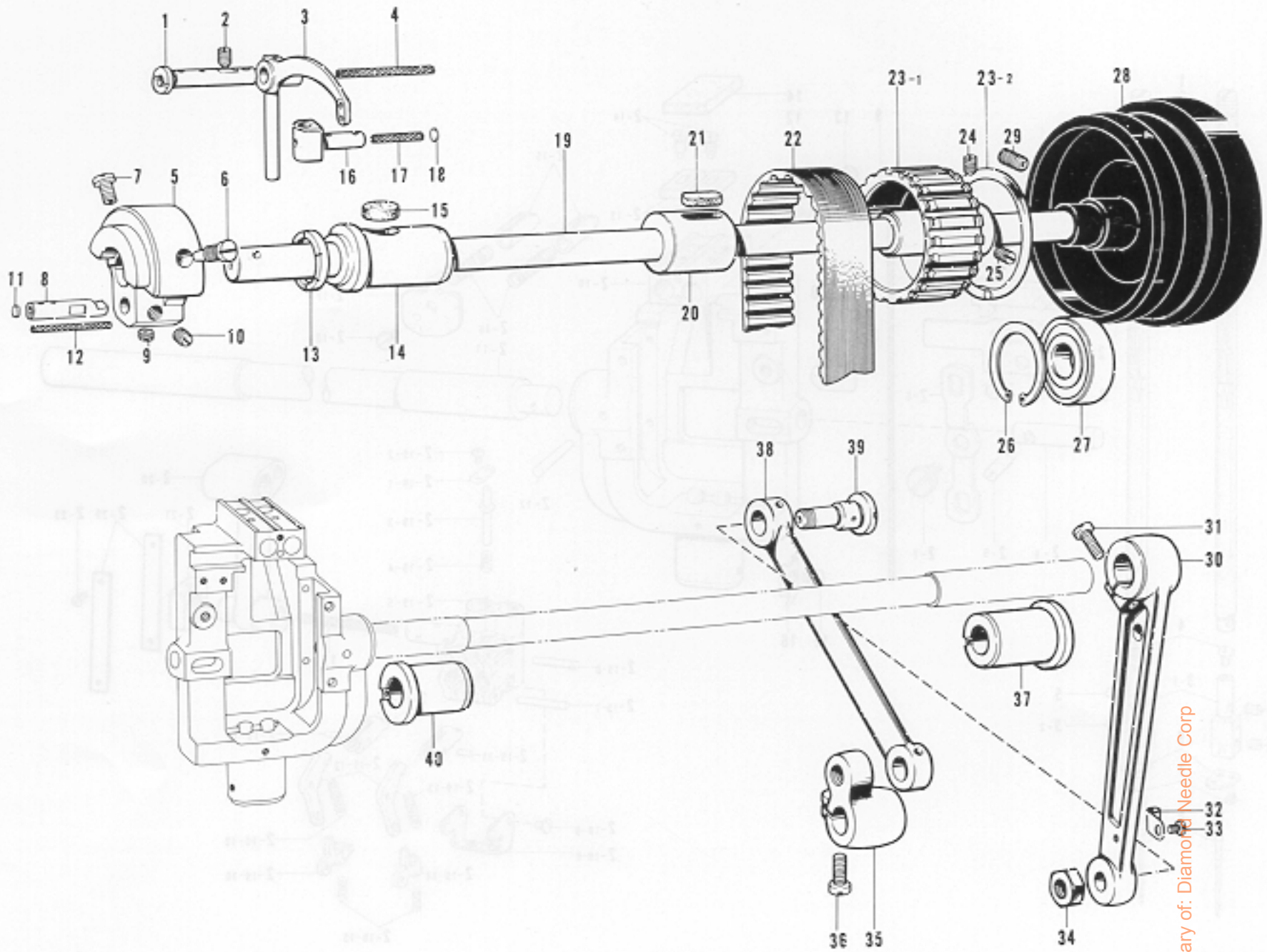
A. Machine Body and Threading



Ref. No.	Name of Parts	Q'ty	Parts No.	Assembly No.	Ref. No.	Name of Parts	Q'ty	Parts No.	Assembly No.
A-1	Face Plate	1	155440-0-01		A-35	Screw 4.37	1	100032-0-03	
A-2	Screw 3.57 x 8	2	009670-8-12		A-36	Pin	1	113386-0-00	
A-3	Face Plate Cap	1	150815-0-01		A-37	Slide Plate, Left	1	112606-0-01	
A-4	Oil Cap	1	104449-0-01		A-38	Slide Plate, Front	1	112610-0-01	
A-5	Thread Take-up Cover	1	155439-C-01		A-39	Screw 5.15	1	116010-0-01	
A-6	Screw 4.76 x 8	1	009710-8-12		A-40	Slide Plate, Right	1	112607-0-01	
A-7	Screw 3.57	1	108960-0-04		A-41	Model Plate	1		
A-8	Top Cover	1	153876-0-02		A-42	Model Plate Pin	2		
A-9	Screw 4.37 x 12	7	009681-2-14		A-43-1	Upper Thread Tension Plate	1		
A-10	Top Cover Packing	1	150989-0-00		A-43-2	Pin	3		
A-11	Top Cover Thread Guide	2	140527-0-01		A-43-3	Tension Stud	2		
A-12	Nut 5.95	2	150553-0-03		A-43-4	Stud Screw	2	144689-0-01	
A-13	Rear Cover	1	112566-0-03		A-43-5	Cap	2	144685-0-01	
A-14	Screw 3.57 x 6	2	009670-6-12		A-43-6	Thread Guide Spring	2	144688-0-01	
A-15	Name Plate	1			A-43-7	Disc	2	144686-0-01	
A-16	Parts Book Number Plate	1			A-43-8	Thread Guide Bracket	2	144687-0-01	
A-17	Name Plate	1			A-43-9	Nut 3.57	2	021670-1-02	
A-18	Pin	2			A-43-10	Tension Control Nut	3	108265-0-01	A-43
A-19	Thread Guide F1	1	155493-0-01		A-43-11	Tension Spring	2	155492-0-01	Upper Tension
A-20	Screw 3.57	1	108960-0-04		A-43-12	Presser for Tension Disc	2	100134-0-01	Control
A-21	Thread Guide F2	1	155494-0-01		A-43-13	Tension Disc	4	145446-0-01	Assembly
A-22	Tension Release Bar	1	144823-0-01		A-43-14	Pin	1	144704-0-01	155490-0-01
A-23	Pipe	1	112714-0-00		A-43-15	Pin	1	144703-0-01	
A-24	Arm Thread Guide Upper	1	108266-0-01		A-43-16	Tension Release Plate	1	144683-0-01	
A-25	Screw 3.57	1	108960-0-04		A-43-17	Stud Screw 3.57	2	112712-0-01	
A-26	Arm Thread Guide, Center	1	112658-0-01		A-43-18	Arm Thread Guide Upper	2	118320-0-01	
A-27	Screw 3.57	1	108960-0-04		A-43-19	Spring Guide	2	108254-0-01	
A-28	Screw 4.37	2	151602-0-02		A-43-20	Screw 2.38	1	144682-0-01	
A-29	Arm Thread Guide, Lower	1	112715-0-01		A-43-21	Thread Take-up Spring	1	155491-0-01	
A-30	Felt	1	114941-0-01		A-43-22	Tension Stud	1	144680-0-01	
A-31	Screw 3.57	1	108960-0-04		A-44	Screw 4.37 x 10	1	009681-0-14	
A-32	Arm Bed	1			A-45	Stopper	1	112709-0-01	
A-33	Screw 3.57	1	112751-0-02		A-46	Screw 3.57 x 6	1	009670-6-12	
A-34	Needle Plate 1/4"	1	117367-0-01		A-47	Screw 3.57	1	100064-0-02	

From the library of: Diamond Needle Corp

B. Upper Shaft Mechanism

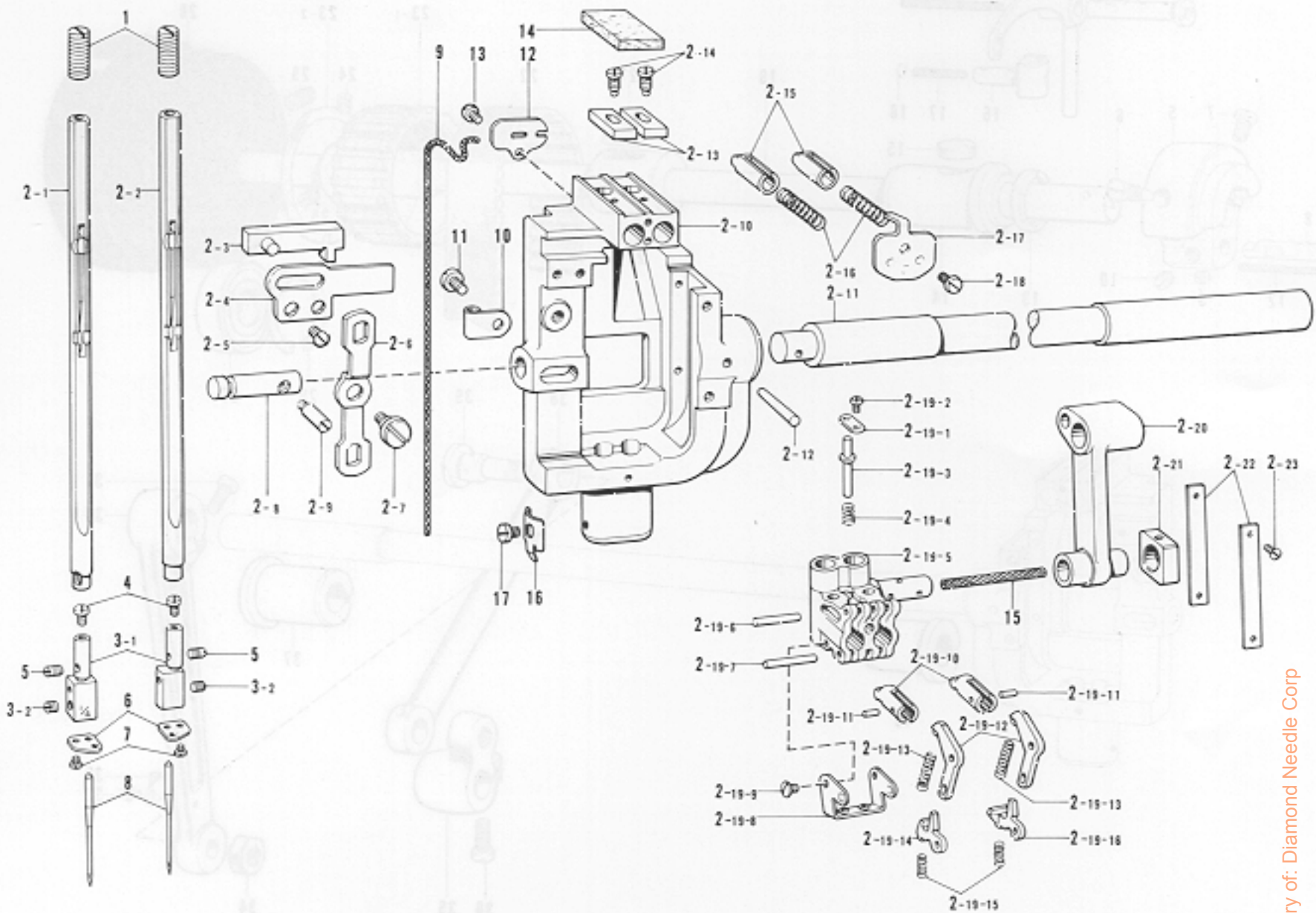


From the library of: Diamond Needle Corp

Ref. No.	Name of Parts	Q'ty	Parts No.	Assembly No.	Ref. No.	Name of Parts	Q'ty	Parts No.	Assembly No.
B-1	Stud	1	155444-0-01		B-23-1	Timing Pulley, Upper	1		B-23 Timing Pulley, Upper Assembly 180157-0-01
B-2	Screw 5.95	2	151605-0-01		B-23-2	Side Ring	2		
B-3	Thread Take-up Lever	1	155443-0-01		B-24	Screw 6.35 x 12	1	015771-2-12	
B-4	Wick	1	150995-0-00		B-25	Screw 6.35 x 12	1	013771-2-12	
B-5	Counter Weight	1	149820-0-00		B-26	Stop Ring C	1	112760-0-01	
B-6	Screw 7.14	1	100250-0-01		B-27	Bearing 6204 VV.	1	072620-4-60	
B-7	Screw 7.14	1	146141-0-01		B-28	Pulley	1	144614-0-01	
B-8	Needle Bar Crank	1	149821-0-01		B-29	Screw 5.95	2	013761-4-10	
B-9	Screw 6.35	1	101706-0-01		B-30	Needle Bar Connecting Rod	1	112595-0-00	
B-10	Screw 6.35	1	100251-0-01		B-31	Screw 6.35	1	105351-0-02	
B-11	Pusher	1	113014-0-00		B-32	Wick Supporter	1	112739-0-01	
B-12	Wick	1	112735-0-00		B-33	Screw 3.57 x 5	1	009670-5-12	
B-13	Thrust Ring	1	112576-0-01		B-34	Nut 7.94	2	101268-0-03	
B-14	Upper Shaft Bushing, Left	1	112573-0-01		B-35	Needle Bar Connecting Crank	1	112598-0-01	
B-15	Felt	1	112734-0-01		B-36	Screw 6.35 x 18	1	009781-8-12	
B-16	Thread Take-up Lever Slide Block	1	155445-0-01		B-37	Needle Bar Rock Shaft Bushing, Right	1	112764-0-01	
B-17	Wick	1	114693-0-01		B-38	Needle Bar Rock Link	1	112596-0-01	
B-18	Pusher	1	113024-0-00		B-39	Needle Bar Rock Link Stud	2	112597-0-01	
B-19	Upper Shaft	1	112572-0-01		B-40	Needle Bar Rock Shaft Bushing, Left	1	112594-0-01	
B-20	Upper Shaft Bushing, Center	1	114680-0-01						
B-21	Felt	1	100248-0-01						
B-22	Timing Belt	1	112586-0-01						

C. Needle Bar Rocking Mechanism

B. Upper Shaft Mechanism

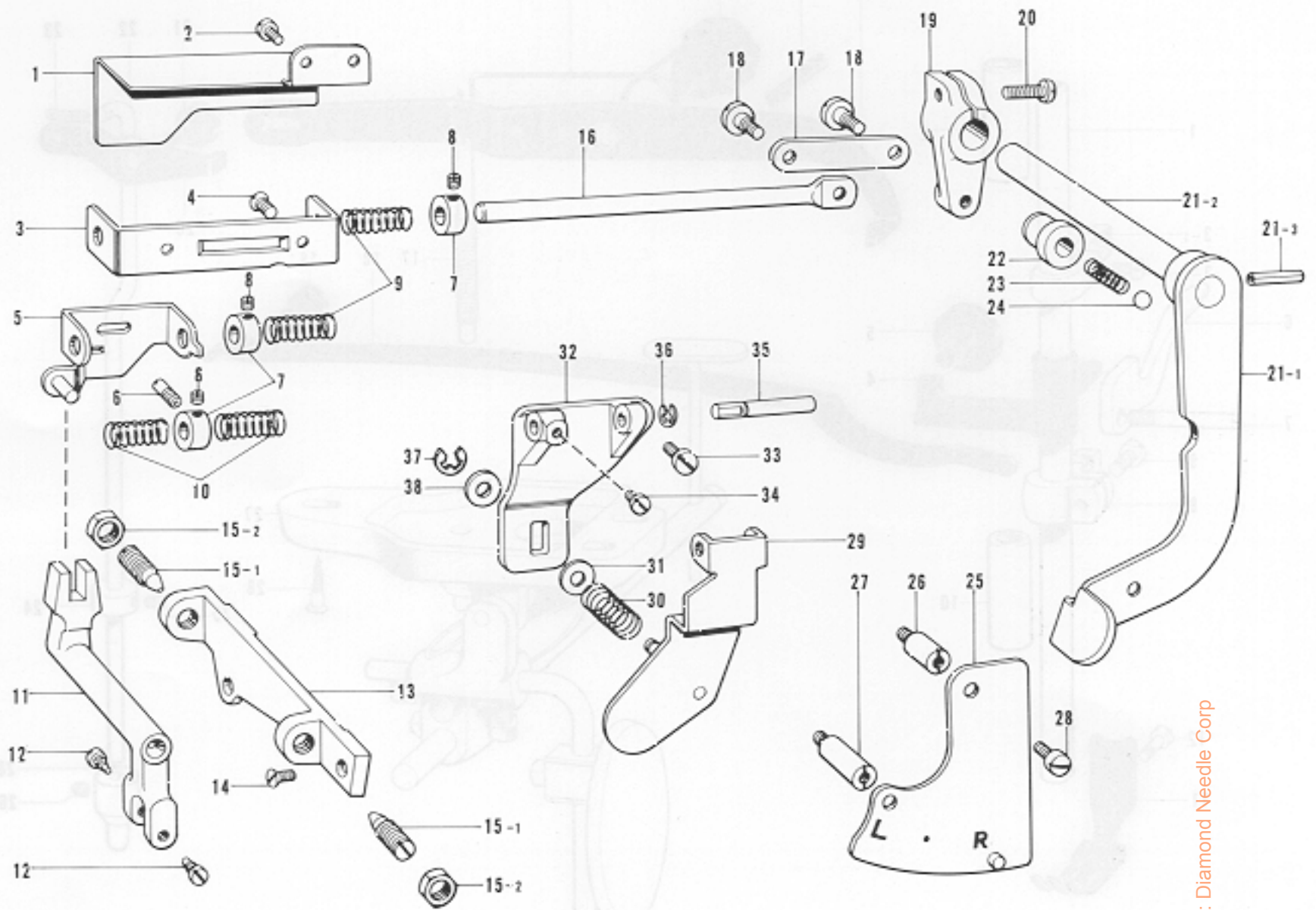


From the library of: Diamond Needle Corp

Ref. No.	Name of Parts	Q'ty	Parts No.	Assembly No.	Ref. No.	Name of Parts	Q'ty	Parts No.	Assembly No.
C- 1	Needle Bar Stopper Screw	2	150817-1-01		C- 2-19-10	Clutch	2		
C- 2- 1	Needle Bar Left Assembly	1	153604-0-01		C- 2-19-11	Pin 1.5 x 5.8	2	149604-0-01	
C- 2- 2	Needle Bar Right Assembly	1	153606-0-01		C- 2-19-12	Clutch Lever	2		
C- 2- 3	Slide Block Assembly	1			C- 2-19-13	Spring	2	149605-0-01	
C- 2- 4	Slide Block Guide Plate	1	149617-0-01		C- 2-19-14	Clutch Stopper, Left	1	149606-0-01	
C- 2- 5	Screw 3.57	2	102843-0-01		C- 2-19-15	Slide Plate Stopper Spring	2	112609-0-01	
C- 2- 6	Slide Block Driving Lever	1	149616-0-01		C- 2-19-16	Clutch Stopper, Right	1	149607-0-01	
C- 2- 7	Screw 4.37	1	120264-0-01		C- 2-20	Needle Bar Crank Rod	1	149613-0-01	C-2
C- 2- 8	Slide Block Driving Stud	1	149614-0-01		C- 2-21	Needle Bar Guide Slide Block	1	150816-0-01	Needle Bar
C- 2- 9	Screw	1	149615-0-01		C- 2-22	Guide Plate	2		Rock Shaft
C- 2-10	Needle Bar Support	1			C- 2-23	Screw 2.38	4	102731-0-04	Assembly
C- 2-11	Needle Bar Rock Shaft	1			C- 3- 1	Needle Clamp 1/4"	2		C-3 Needle Clamp
C- 2-12	Pin	1	107030-0-01		C- 3- 2	Screw 3.18 x 4	2	013660-4-13	with Screw 1/4"
C- 2-13	Needle Bar Rotate Stopper	2	149624-0-01	C-2	C- 4	Screw 3.18	2	149831-0-01	150830-0-01
C- 2-14	Screw 3.18	2	149625-0-01	Needle Bar	C- 5	Screw 3.18	2	149833-0-01	
C- 2-15	Needle Bar Stopper	2	149621-0-01	Rock Shaft	C- 6	Thread Guide Plate	2	149832-0-01	
C- 2-16	Needle Bar Stopper Spring	2	149622-0-01	Assembly	C- 7	Screw 1.98	2	107404-0-00	
C- 2-17	Spring Lid	1	149623-0-01	150369-0-01	C- 8	Needle DP x 5	2		
C- 2-18	Screw 3.18 x 5	1	001660-5-12		C- 9	Wick	1	150374-0-00	
C- 2-19- 1	Release Pin Cover	1	149612-0-01		C-10	Wick Supporter	2	112739-0-01	
C- 2-19- 2	Screw 2.38 x 3.5	1	001639-3-12		C-11	Screw 3.57 x 5	2	009670-5-12	
C- 2-19- 3	Release Pin	1	149610-0-01		C-12	Wick Cover	1	149626-0-01	
C- 2-19- 4	Release Pin Spring	1	149611-0-01		C-13	Screw 3.18 x 5	1	001660-5-12	
C- 2-19- 5	Needle Bar Clamp	1			C-14	Felt	1	149834-0-00	
C- 2-19- 6	Pin 2 x 15.8	1	149827-0-01		C-15	Wick	1	150825-0-01	
C- 2-19- 7	Pin 2 x 17.8	1	149608-0-01		C-16	Needle Bar Indicator	1	148598-0-01	
C- 2-19- 8	Spring Holder	1	149609-0-01		C-17	Screw 2.38	1	105288-0-01	
C- 2-19- 9	Screw 2.38	2	100105-0-02						

D. Needle Bar Flip-up Mechanism

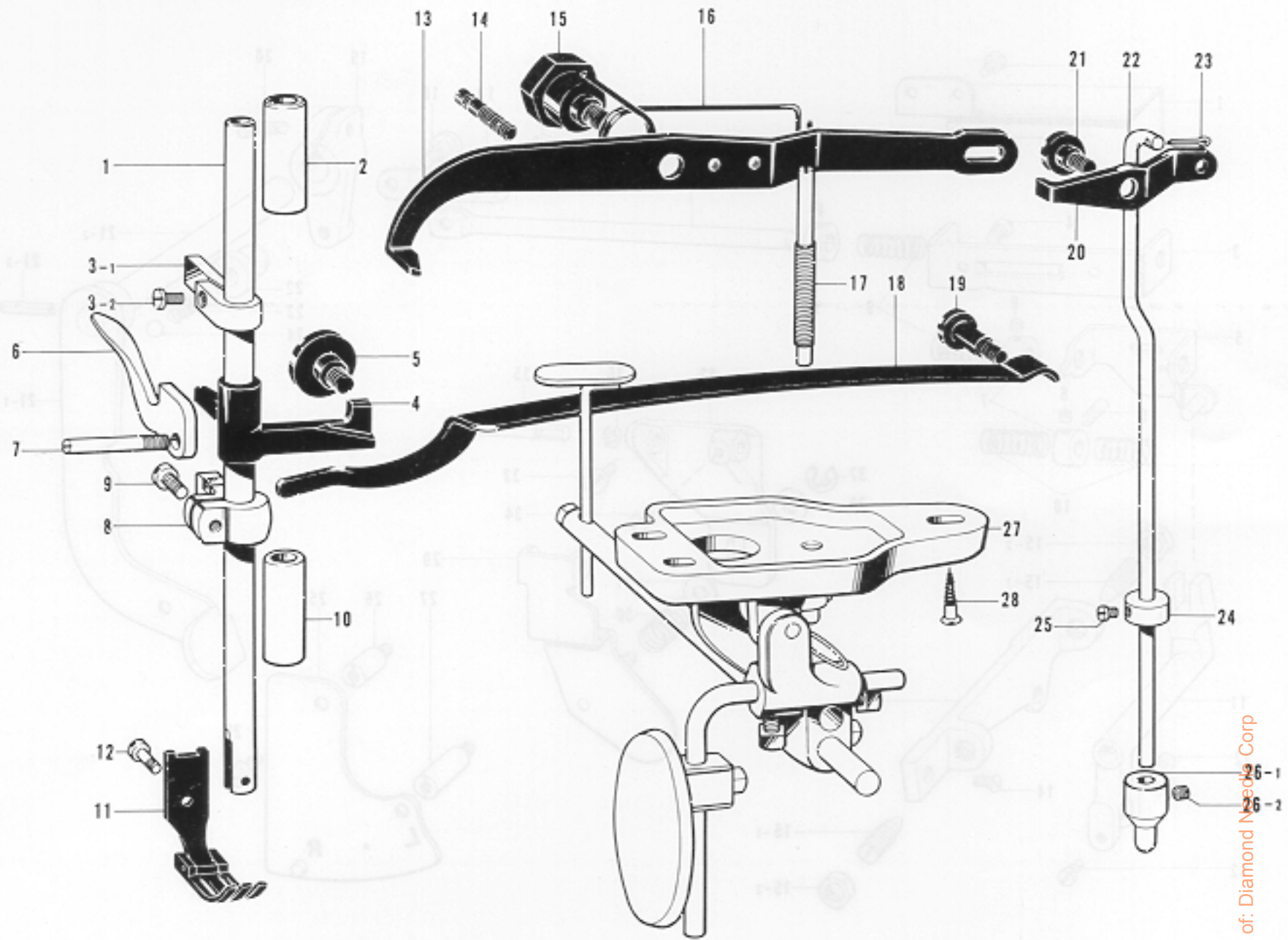
Presser Foot Mechanism



From the library of: Diamond Needle Corp

Ref. No.	Name of Parts	Q'ty	Parts No.	Assembly No.	Ref. No.	Name of Parts	Q'ty	Parts No.	Assembly No.
D-1	Slide Shaft Cover	1	149866-0-02		D-20	Screw 4.76 x 14	1	009711-4-13	
D-2	Screw 3.57 x 6	2	009670-6-12		D-21-1	Stop Lever	1		D-21 Stop Lever Shaft Assembly 149847-0-01
D-3	Slide Shaft Supporter	1	149858-0-01		D-21-2	Stop Lever Shaft	1		
D-4	Screw 4.37	2	107272-0-02		D-21-3	Spring Pin AW3	1	047301-8-42	
D-5	Slide Shaft Support Bracket Assembly	1	149860-0-01		D-22	Joint Guide Bushing	1	150819-0-01	
D-6	Guide Screw	1	149865-0-01		D-23	Spring	1	150820-0-01	
D-7	Collar	3	149864-0-01		D-24	Steel Ball	1	071063-5-50	
D-8	Screw 3.57	5	011679-3-12		D-25	Flip-up Holder Plate Assembly	1	150818-0-01	
D-9	Spring	2	149857-0-01		D-26	Stud (S)	1	149853-0-01	
D-10	Spring	2	149863-0-01		D-27	Stud (L)	1	149852-0-01	
D-11	Rock Crank	1	149868-0-01		D-28	Screw 4.76 x 8	2	009710-8-13	
D-12	Screw	2	100043-0-03		D-29	Push Lever Assembly	1	149839-0-01	
D-13	Rock Crank Shaft Supporter	1	149867-0-01		D-30	Push Lever Spring	1	149843-0-01	
D-14	Screw 4.37	2	107272-0-02		D-31	Washer 4.76	1	025710-2-32	
D-15-1	Taper Screw, Right 7.14	2		D-15 Taper Screw Assembly 115638-0-04	D-32	Push Lever Bracket	1	149837-0-01	
D-15-2	Nut 7.14	2			D-33	Screw 4.76 x 10	2	009711-0-12	
D-16	Slide Shaft	1	149859-0-01		D-34	Screw 3.57 x 5	1	009670-5-12	
D-17	Lever Shaft Arm Link	1	149856-0-01		D-35	Stud 5 x 32	1	149838-0-01	
D-18	Screw 4.37	2	146597-1-01		D-36	Stop Ring	1	048030-3-42	
D-19	Lever Shaft Arm	1	149855-0-01		D-37	Stop Ring	1	048040-3-42	
					D-38	Washer 4.76	1	025710-2-32	

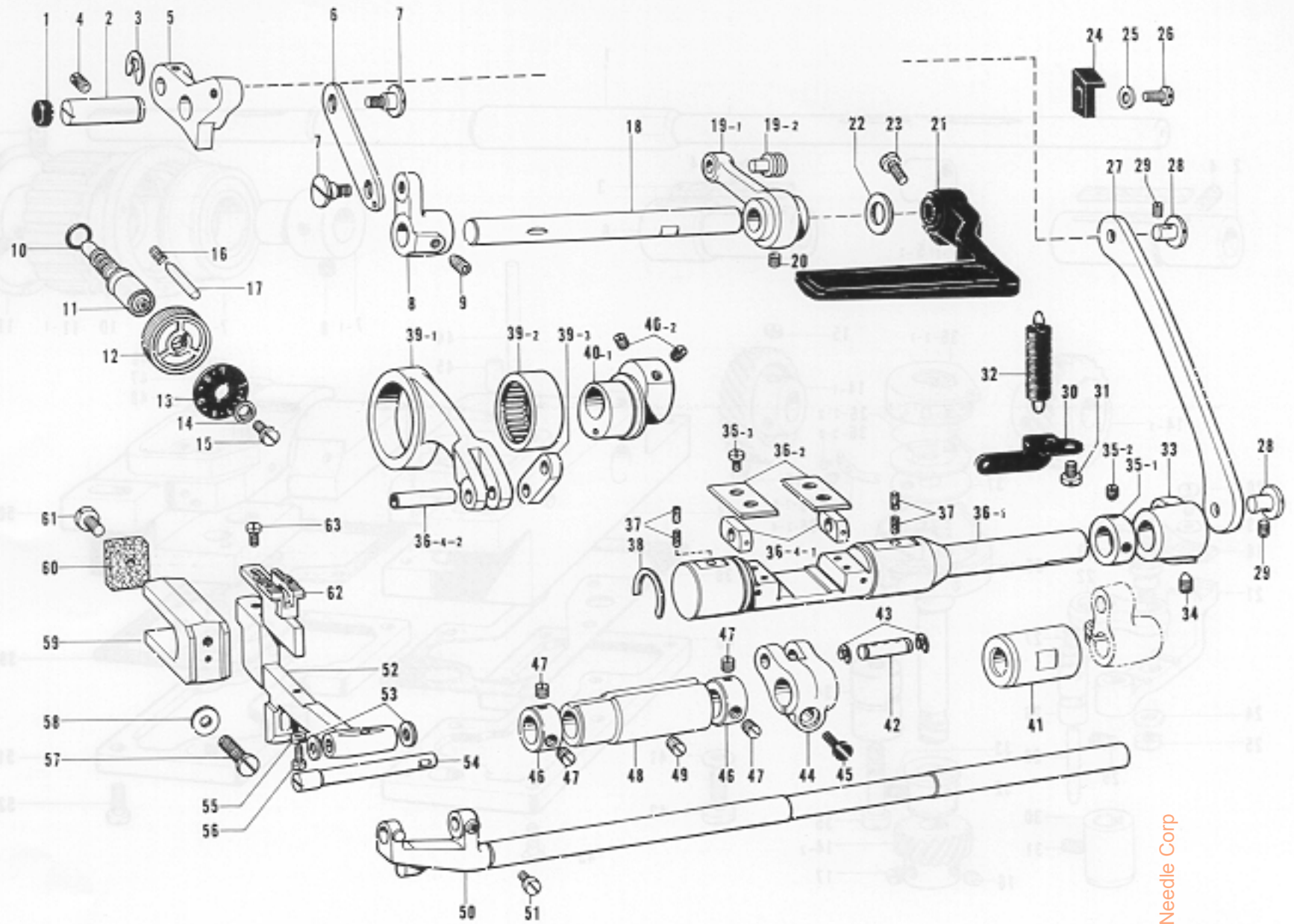
E. Presser Foot Mechanism



Ref. No.	Name of Parts	Q'ty	Parts No.	Assembly No.	Ref. No.	Name of Parts	Q'ty	Parts No.	Assembly No.
E- 1	Presser Bar	1	112614-0-01		E-15	Screw 6.35	1	112626-0-01	
E- 2	Presser Bar Bushing, Upper	1	112615-0-01		E-16	Spring	1	112629-0-01	
E- 3-1	Presser Bar Guide	1		E-3	Presser Bar Guide Assembly 180950-0-01	E-17	Presser Adjusting Screw	1	112624-0-01
E- 3-2	Screw 4.37 x 7	1	009680-7-12	E-18		Presser Plate Spring	1	118170-1-01	
E- 4	Presser Bar Lifter	1	148483-0-01		E-19	Screw 6.35	1	112623-0-01	
E- 5	Screw	1	112631-0-01		E-20	Knee Lifter Lever	1	155505-0-01	
E- 6	Presser Foot Lifter	1	112618-0-01		E-21	Screw 6.35	1	112628-0-01	
E- 7	Screw	1	112619-0-01		E-22	Knee Lifter Connecting Rod	1	155447-0-01	
E- 8	Presser Bar Bracket	1	112616-0-01		E-23	Pin	1	114909-0-01	
E- 9	Screw 3.57 x 8	1	009670-8-12		E-24	Set Collar	1	149854-0-01	
E-10	Presser Bar Bushing, Lower	1	112763-0-01		E-25	Screw 3.57	1	144458-0-01	
E-11	Presser Foot 1/4"	1	155453-0-01		E-26-1	Knee Lifter Bracket	1		E-26 Knee Lifter Bracket Assembly 183140-0-01
E-12	Screw 3.57	1	113050-0-01		E-26-2	Screw 4.37	1	151601-0-02	
E-13	Knee Lifter Lever	1	112625-0-01		E-27	Knee Lifter Assembly	1	151098-0-01	
E-14	Stopper Screw	1	112630-0-01		E-28	Screw 6.2 x 32	3	106030-0-01	

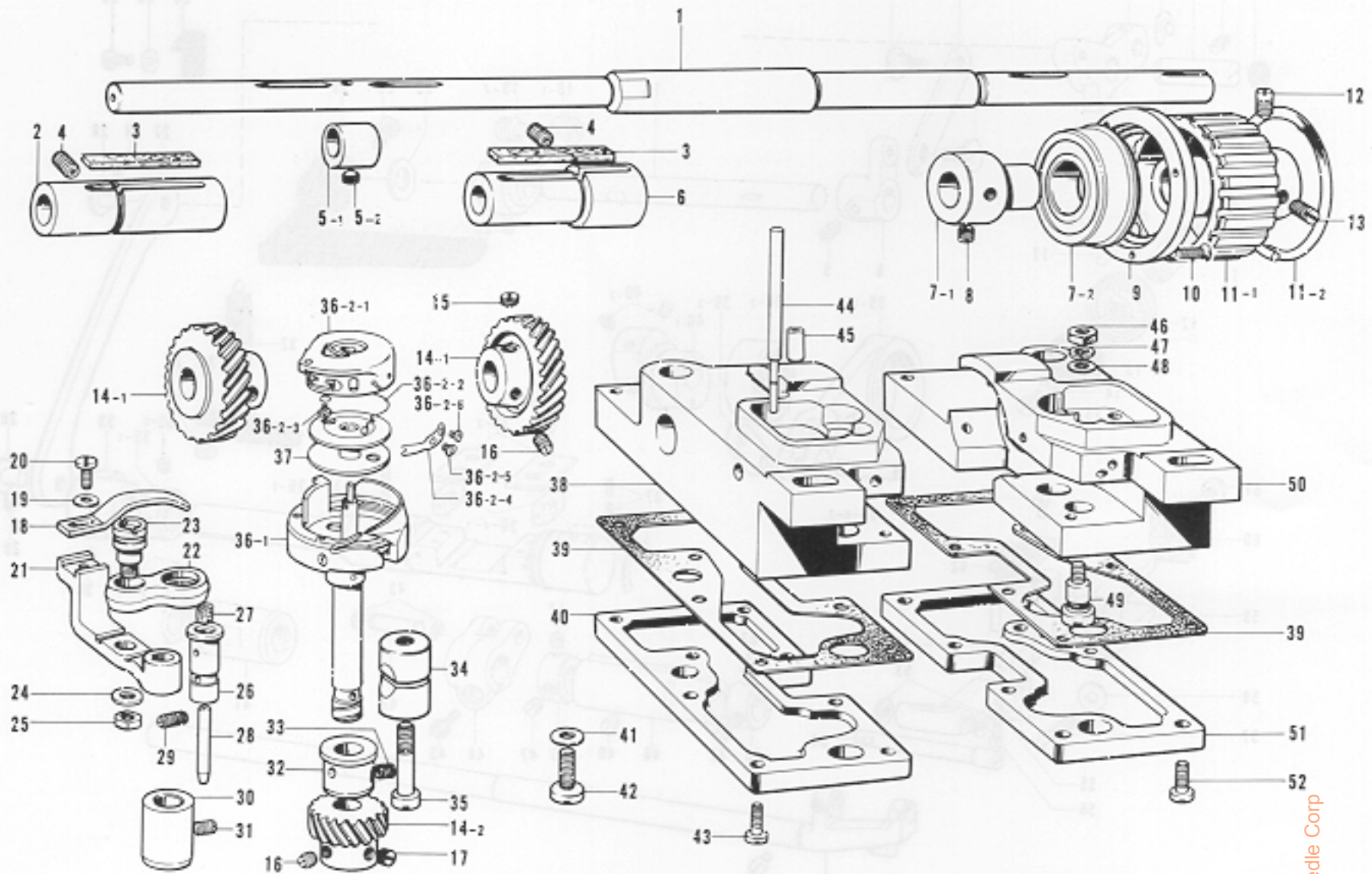
From the library of: Diamond Needle Corp

F. Feed Mechanism



Ref. No.	Name of Parts	Q'ty	Parts No.	Assembly No.	Ref. No.	Name of Parts	Q'ty	Parts No.	Assembly No.
F-1	Cap	1	143766-0-01		F-36-1	Feed Regulator Shaft	1		F-36
F-2	Feed Regulator Stud	1	148488-0-01		F-36-2	Guide Plate	2	143594-0-01	Feed Regulator Shaft Assembly 148771-0-01
F-3	Stop Ring E7	1	048070-3-42		F-36-3	Screw 4.37 x 10	4	009681-0-12	
F-4	Screw 5.95	1	151605-0-01		F-36-4-1	Feed Regulator Slide Block	2		F-36-4 Slide Block Assembly 145328-0-01
F-5	Feed Regulator Stud	1	148489-0-01		F-36-4-2	Pin	1		
F-6	Connecting Plate	1	118746-0-01		F-37	Felt	4	148743-0-01	
F-7	Screw 4.37	2	112072-0-01		F-38	Stop Ring	1	143597-0-01	
F-8	Feed Regulator Bracket	1	118747-0-01		F-39-1	Lever Feed Connecting Rod	1	150927-0-00	F-39 Level Feed Connecting Rod Assembly 150926-0-01
F-9	Screw 5.95	1	118853-0-01		F-39-2	Needle Bearing	1	118954-0-00	
F-10	Packing	1	108549-0-01		F-39-3	Level Feed Connecting Link	1	143613-0-01	
F-11	Length Control Screw	1	143598-0-01		F-40-1	Eccentric Wheel	1		F-40 Eccentric Wheel With Screw 155451-0-01
F-12	Length Control Dial	1	153168-0-01		F-40-2	Screw 5.95	2	151605-0-01	
F-13	Length Control Plate	1	154792-0-01		F-41	Feed Rock Shaft Bushing, Right	1	148493-0-01	
F-14	Length Control Supporter	1	142746-0-02		F-42	Stud	1	143616-0-01	
F-15	Screw 4.76	1	142747-0-02		F-43	Stop Ring E6	2	048060-3-42	
F-16	Notch Spring	1	100328-0-01		F-44	Lever Feed Arm	1	150930-0-01	
F-17	Pin	1	145502-0-01		F-45	Screw 6.35 x 18	1	009781-8-12	
F-18	Feed Regulator Lever Shaft	1	155450-0-01		F-46	Collar	2	113074-0-01	
F-19-1	Link (B)	1		F-19 Link Assembly 143608-0-01	F-47	Screw 6.35	4	101706-0-01	
F-19-2	Spring Hook	1	108546-0-01		F-48	Feed Rock Shaft Bushing, Left	1	148494-0-01	
F-20	Screw 5.95 x 6	1	014760-6-22		F-49	Screw 5.95	1	013761-4-10	
F-21	Reverse Lever	1	147503-0-01		F-50	Feed Rock Shaft	1	149001-0-01	
F-22	Spacer	1	156070-0-01		F-51	Screw 4.37	1	104908-0-04	
F-23	Screw 4.76 x 14	1	009711-4-12		F-52	Feed Bracket	1	151081-0-01	
F-24	Reverse Lever Stopper	1	149282-0-01		F-53	Thrust Ring	2	143591-0-01	
F-25	Washer	1	100645-0-03		F-54	Feed Bracket Shaft	1	148977-0-01	
F-26	Screw 4.37 x 10	1	009681-0-12		F-55	Nut 3.18	1	021660-1-03	
F-27	Feed Regulator Connecting Link	1	155448-0-01		F-56	Screw 3.18	1	107278-0-02	
F-28	Pin	2	118713-0-01		F-57	Screw 5.95 x 14	1	009761-4-12	
F-29	Screw 4.37	2	151602-0-01		F-58	Washer 6	1	025060-1-32	
F-30	Spring Hook Plate	1	143610-0-01		F-59	Feed Bracket Fork	1	150958-0-01	
F-31	Screw 4.76 x 8	1	009710-8-12		F-60	Felt	1	112759-0-01	
F-32	Spring	1	143609-0-01		F-61	Screw 3.57	1	100242-0-03	
F-33	Feed Regulator Arm	1	155449-0-01		F-62	Feed Dog 1/4"	1	112660-0-01	
F-34	Screw 5.95	1	118853-0-01		F-63	Screw 3.18	2	116283-0-01	
F-35-1	Collar	1		F-35 Collar Assembly 180321-0-01					
F-35-2	Screw 6.35	2	101706-0-01						

G. Lower Shaft and Rotary Hook Mechanism

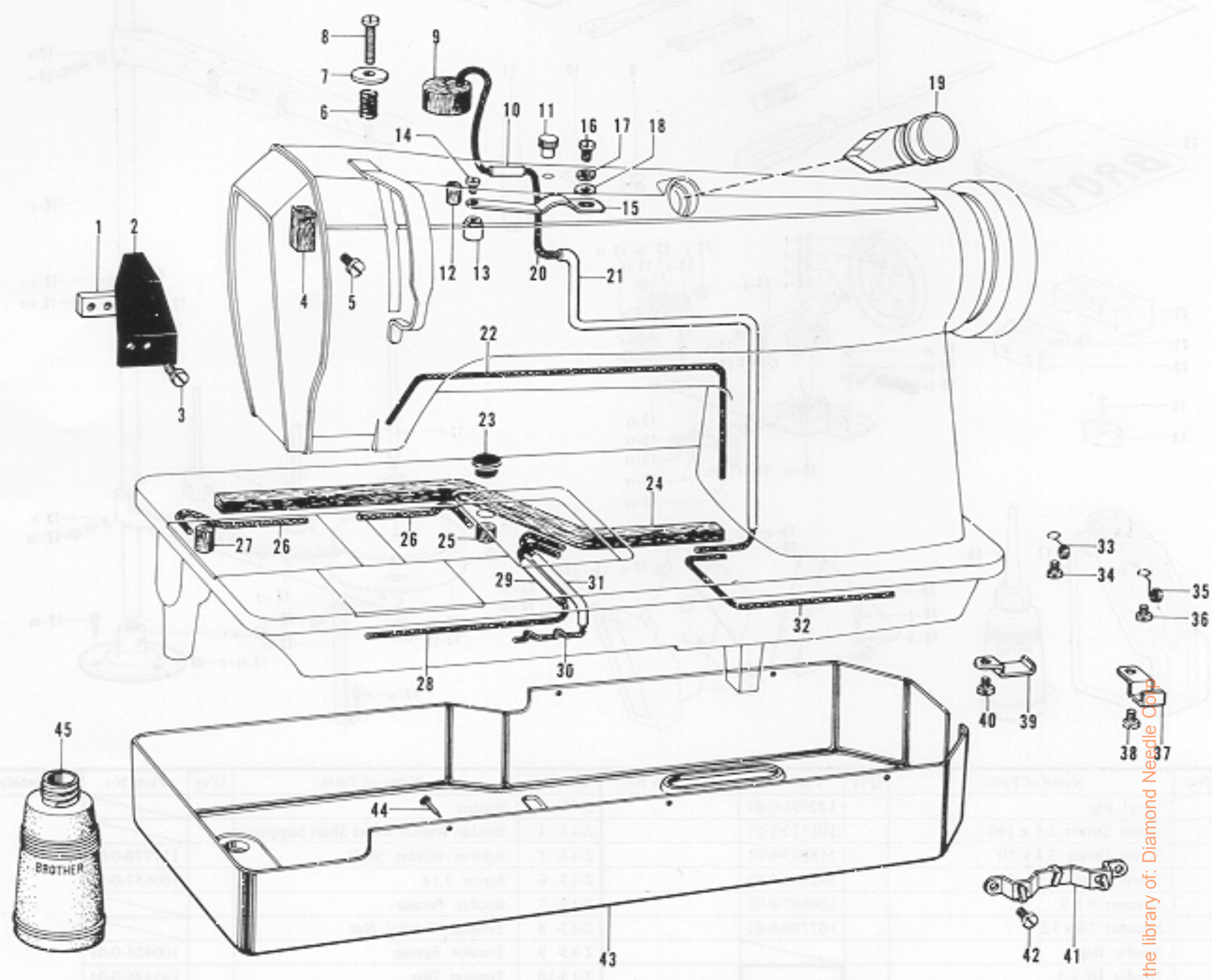


Ref. No.	Name of Parts	Q'ty	Parts No.	Assembly No.	Ref. No.	Name of Parts	Q'ty	Parts No.	Assembly No.
G- 1	Lower Shaft	1	151082-0-01		G-27	Felt	2	107155-0-01	
G- 2	Rotary Hook Base Bushing, Left	1	148503-0-00		G-28	Pipe	1	112696-0-00	
G- 3	Felt	2	113362-0-01		G-29	Screw 4.76	2	153483-0-01	
G- 4	Screw 5.95	2	151604-0-01		G-30	Rotary Hook Shaft D	2	150965-0-01	
G- 5-1	Vertical Feed Eccentric Wheel	1		G-5 Feed Eccentric Assembly 181486-0-01	G-31	Screw 4.76	2	107794-0-01	
G- 5-2	Screw 6.35	1	112684-0-01		G-32	Rotary Hook Shaft U	2	150964-1-01	
G- 6	Rotary Hook Base Bushing, Right	1	148502-0-00		G-33	Screw 4.76	2	107794-0-01	
G- 7-1	Ball Bearing	1	112666-0-00	G-7 Bearing Holder Assembly 112698-0-01	G-34	Pinch Sleeve	2	112699-0-01	
G- 7-2	Bushing	1	112667-0-01		G-35	Screw 5.95	2	112700-0-01	
G- 8	Screw 6.35 x 7	2	013780-7-10		G-36-1	Outer Rotary Hook Assembly	2		G-36 Rotary Hook 155466-0-01
G- 9	Presser	1	112668-0-01		G-36-2-1	Bobbin Case	2		G-36-2 Bobbin Case Assembly 155476-0-01
G-10	Screw 3.57 x 12	3	005671-2-12		G-36-2-2	Spring	2	155478-0-01	
G-11-1	Timing Pulley, Lower	1		G-11 Timing Pulley, Lower Assembly 180164-0-01	G-36-2-3	Screw	2	151035-0-01	
G-11-2	Side Ring	1			G-36-2-4	Tension Adjusting Spring	2	155479-0-01	
G-12	Screw 6.35 x 12	1	015771-2-12		G-36-2-5	Tension Adjusting Screw	2	151029-0-01	
G-13	Screw 6.35 x 12	1	013771-2-12		G-36-2-6	Screw	2	155480-0-01	
G-14-1	Spiral Gear	2		G-14 Spiral Gear Assembly 180949-0-01	G-37	Bobbin	2	155484-0-01	
G-14-2	Pinion	2			G-38	Rotary Hook Base, Left	1	155465-0-01	
G-15	Screw 6.35	2	112684-0-01		G-39	Packing	2	112755-0-01	
G-16	Screw 6.35	4	100251-0-01		G-40	Oil Reservoir, Left	1	112686-0-01	
G-17	Screw 6.35	6	101706-0-01		G-41	Washer	2	100197-0-02	
G-18	Bobbin Case Opener	2	155482-0-01		G-42	Screw 6.35	2	105351-0-02	
G-19	Washer	2	105161-0-02		G-43	Screw 4.76	8	100320-0-02	
G-20	Screw 3.57 x 8	2	009670-8-12		G-44	Oil Gauge	2	151006-0-01	
G-21	Opener Lever	2	150968-0-01		G-45	Oil Pipe	2	115287-0-00	
G-22	Opener Link	2	150967-0-01		G-46	Nut 4.37	2	105234-0-01	
G-23	Stud	2	148005-0-01		G-47	Washer 4.37	2	028680-2-43	
G-24	Washer 4.76	2	025710-2-32		G-48	Washer	2	100645-0-03	
G-25	Nut 4.76	2	110161-0-06		G-49	Oil Adjusting Screw	2	112756-0-01	
G-26	Opener Lever Stud	2	150969-0-01		G-50	Rotary Hook Base, Right	1	155483-0-01	
					G-51	Rotary Hook Base Oil Reservoir, Right	1	112702-0-01	
					G-52	Screw 4.76	8	100320-0-02	

From the library of: Diamond Needle Corp

H. Lubrication

Accessories



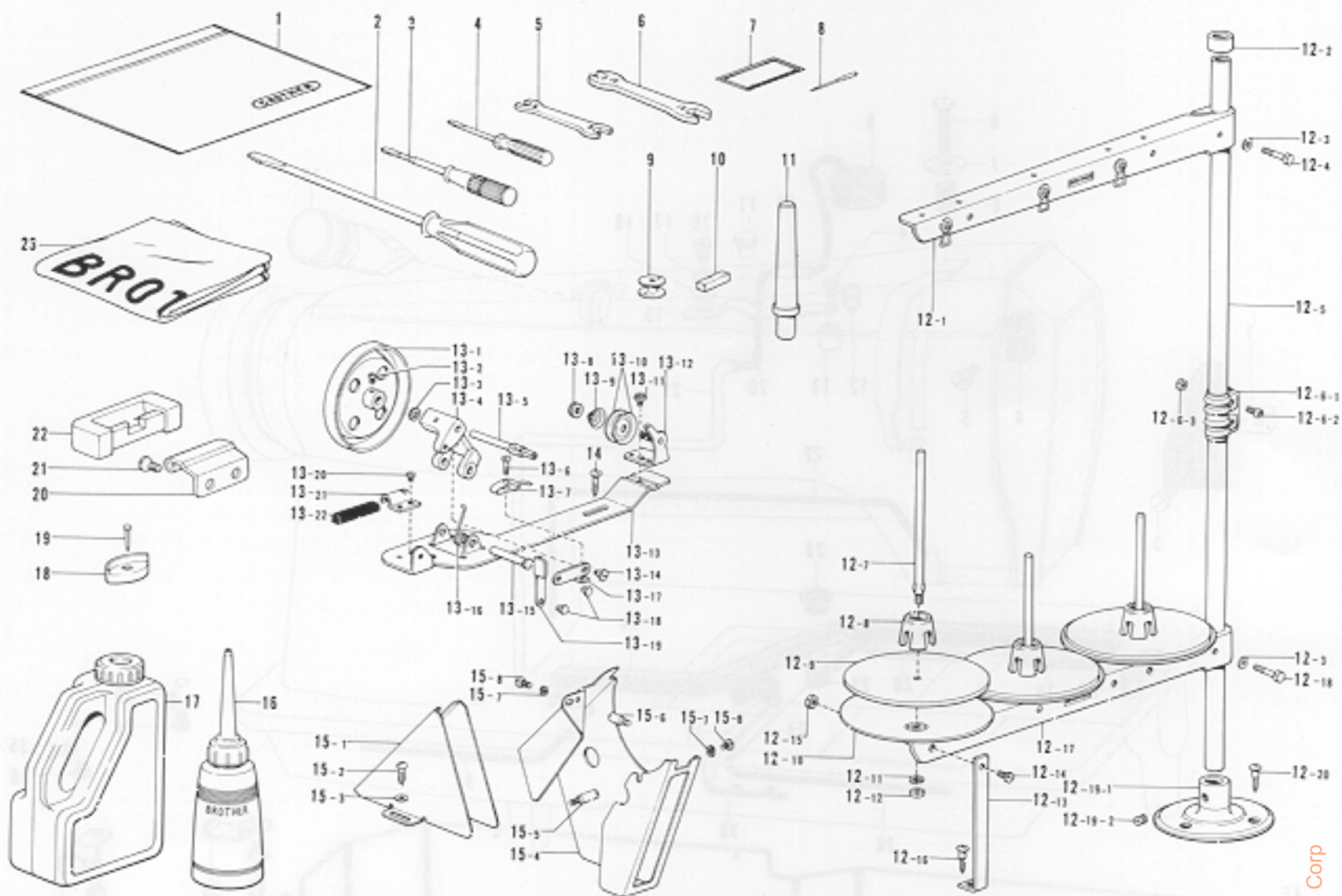
From the library of: Diamond Needle Co.

Ref. No.	Name of Parts	Q'ty	Parts No.	Assembly No.	Ref. No.	Name of Parts	Q'ty	Parts No.	Assembly No.
H-1	Oil Stopper Plate Presser	1	112717-0-01		H-24	Felt	1	155486-0-01	
H-2	Oil Stopper Plate	1	112716-0-01		H-25	Felt	1	112753-0-01	
H-3	Screw 4.76 x 8	1	009710-8-12		H-26	Wick	2	155488-0-00	
H-4	Felt	1	148762-0-01		H-27	Felt	1	112754-0-01	
H-5	Screw 3.57 x 6	1	001670-6-12		H-28	Wick	1	112738-0-00	
H-6	Felt	1	155485-0-01		H-29	Oil Tube	1	143671-0-00	
H-7	Washer	1	116662-0-03		H-30	Wick 4 x 4	1	152956-0-01	
H-8	Screw 4.76 x 20	1	069712-0-12		H-31	Oil Tube	1	148733-0-01	
H-9	Felt	1	141742-0-01		H-32	Wick	1	155489-0-00	
H-10	Oil Tube	1	150997-0-00		H-33	Tube Holder	1	112743-0-01	
H-11	Cap for Oil Inlet	1	113526-0-01		H-34	Set Screw 3.57 x 5	1	009670-5-12	
H-12	Felt	1	112754-0-01		H-35	Tube Stopper	1	112744-0-01	
H-13	Oil Pendulum	1	150994-0-00		H-36	Screw 3.57 x 5	1	009670-5-12	
H-14	Screw 3.57 x 6	1	009670-6-12		H-37	Felt Presser	4	155487-0-01	
H-15	Spring	1	150993-0-01		H-38	Screw 3.57 x 5	4	009670-5-12	
H-16	Screw 4.37 x 6	1	009680-6-12		H-39	Felt Presser	1	114297-0-01	
H-17	Washer 4.37	1	028680-2-43		H-40	Screw 3.57 x 5	1	009670-5-12	
H-18	Washer 4.37	1	025680-2-32		H-41	Wick Support	1	143673-0-01	
H-19	Oil Gauge Window	1	150990-0-01		H-42	Screw 3.18 x 4	2	009660-4-12	
H-20	Wick	1	112738-0-00		H-43	Oil Pan	1	151007-0-01	
H-21	Oil Tube	1	112737-0-01		H-44	Nail	5	109714-0-00	
H-22	Wick	1	112736-0-00		H-45	Oiler	1	114486-0-01	
H-23	Oil Cap	1	112758-0-01						

*The details of included accessories are subject to change. *Les détails des accessoires inclus sont sujets à des changements. *Änderungen in der Aufstellung der mitgelieferten Zubehörteile sind vorbehalten.

Z. Accessories

noitcaid .H



Ref. No.	Name of Parts	Q'ty	Parts No.	Assembly No.	Ref. No.	Name of Parts	Q'ty	Parts No.	Assembly No.
Z- 1	Vinyl Bag		122991-0-01		Z-13- 3	Washer			
Z- 2	Screw Driver 5.5 x 190		101572-1-01		Z-13- 4	Bobbin Winder Wheel Shaft Supporter			
Z- 3	Screw Driver 3.4 x 70		118837-0-01		Z-13- 5	Bobbin Winder Shaft		117970-0-01	
Z- 4	Screw Driver 1.9 x 52		142443-0-01		Z-13- 6	Screw 3.18		100657-0-01	
Z- 5	Spanner 8 x 9		100887-0-01		Z-13- 7	Bobbin Presser			
Z- 6	Spanner 10 x 12		107780-0-01		Z-13- 8	Tension Control Nut			
Z- 7	Needle Bag				Z-13- 9	Tension Spring		100401-0-01	
Z- 8	Needle DP x 5				Z-13-10	Tension Disc		145446-0-01	
Z- 9	Bobbin		155484-0-01		Z-13-11	Screw 4.37			
Z-10	Felt		114941-0-01		Z-13-12	Bobbin Winder Guide Assembly			Z-13-13
Z-11	Head Rest		100477-0-01		Z-13-13	Bobbin Winder Wheel Bracket			Z-13-14
Z-12- 1	Thread Hanger Assembly 3		150193-0-01		Z-13-14	Screw 3.18		100659-0-01	117963-0-01
Z-12- 2	Column Cap			Z-12 Cotton Stand Assembly 3 150151-0-01	Z-13-15	Pin			
Z-12- 3	Washer		025050-2-33		Z-13-16	Spring		117969-0-01	
Z-12- 4	Bolt 5 x 28		017502-8-03		Z-13-17	Bobbin Presser Arm			
Z-12- 5	Pipe		150172-0-01		Z-13-18	Pin		100661-0-01	
Z-12- 6-1	Joint			Z-12-6 Joint for Cotton Stand 150106-0-01	Z-13-19	Bobbin Presser Bracket			
Z-12- 6-2	Screw 5 x 14		150202-0-01		Z-13-20	Screw 3.57 x 3.5		009679-3-12	
Z-12- 6-3	Nut 5		021500-1-03		Z-13-21	Bobbin Winder Wheel Stopper Holder			
Z-12- 7	Spool Shaft (B)		150179-0-01		Z-13-22	Bobbin Winder Wheel Stopper		100662-0-01	
Z-12- 8	Spool Cushion		126863-0-00		Z-14	Screw 5.5 x 20		100666-0-02	
Z-12- 9	Spool Mat		150182-0-00		Z-15- 1	Belt Cover D			
Z-12-10	Spool Stand Base		150180-0-00		Z-15- 2	Screw 5.5 x 20		100666-0-02	
Z-12-11	Washer 2-5		028050-2-43		Z-15- 3	Washer 5.56		025750-1-32	
Z-12-12	Nut 5		021500-1-03		Z-15- 4	Belt Cover U			Z-15
Z-12-13	Spool Holder Supporter A		150188-0-01		Z-15- 5	Belt Cover Stud (B)		147856-0-02	Belt Cover Complete D 147908-0-01
Z-12-14	Screw 5 x 10		007501-0-03		Z-15- 6	Belt Cover Stud (D)		147858-0-01	
Z-12-15	Nut 5		021500-1-03		Z-15- 7	Washer 4.37		028680-2-42	
Z-12-16	Screw 4.5 x 22		031452-2-03		Z-15- 8	Screw 4.37 x 8		009680-8-12	
Z-12-17	Spool Holder Assembly 3		150175-0-01		Z-16	Oiler		114483-0-01	
Z-12-18	Bolt 5 x 28		017502-8-03		Z-17	Oil Tank		154702-0-01	
Z-12-19-1	Bracket		150189-0-01	Z-12-19 Bracket Assembly 150139-0-01	Z-18	Head Cushion		148890-1-01	
Z-12-19-2	Screw 6 x 10		150181-0-01		Z-19	Nail		109714-0-00	
Z-12-20	Screw 4.5 x 22		031452-2-03		Z-20	Head Hinge		148882-0-01	
Z-13- 1	Bobbin Winder Wheel Assembly			Z-13 Bobbin Winder Assembly 117963-0-01	Z-21	Screw 6.35		112569-0-01	
Z-13- 2	Screw 4.37 x 5		100366-0-02		Z-22	Rubber Hinge		143910-0-01	
					Z-23	Head Cover		144222-0-01	

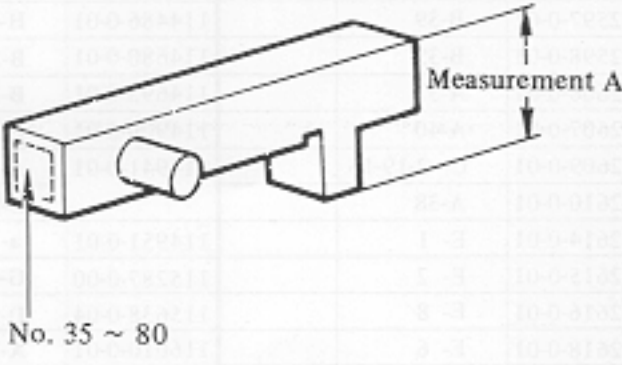
*The details of included accessories are subject to change.
 *Les détails des accessoires inclus sont sujets à des changements.

*Änderungen in der Aufstellung der mitgelieferten Zubehöre sind vorbehalten.
 *Los detalles de los accesorios incluidos pueden variar.

From the library of: Diamond Needle Corp



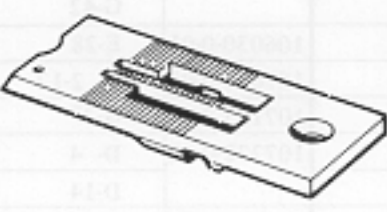
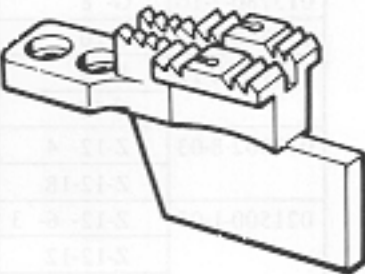
DIFFERENT PARTS LIST

Ref. No.	Sub-Class Name of Parts	-3 (For medium-thick materials)	-5 (For thick materials)
C-8	Needle DP x 5	107415-0-14	107415-0-22
Z-8			

Ref. No.	Name of Parts	Parts No.	No.	Measurement A
C-2-3		149618-0-02	35	11.35 mm
		149618-0-03	40	11.40 mm
		149618-0-04	45	11.45 mm
		149618-0-05	50	11.50 mm
		149618-0-06	55	11.55 mm
		149618-0-07	60	11.60 mm
		149618-0-08	65	11.65 mm
		149618-0-09	70	11.70 mm
		149618-0-10	75	11.75 mm
		149618-0-11	80	11.80 mm

* When placing an order for slide block assembly, please specify the part code number, depending upon the No. marked on the side face of the part or "A" measurement, referring the above list.

a. GAUGE PARTS LIST

Needle Gauge	Presser Foot Assembly	Needle Clamp with Screw	Needle Plate Assembly	Feed Dog				
Model 1/4 inch								
inch	Ref No.	Parts No.	Ref. No.	Parts No.	Ref. No.	Parts No.	Ref. No.	Parts No.
1/8 inch (3.17 mm)	a-1-1	155463-0-01	a-1-2	150885-0-01	a-1-3	117369-0-01	a-1-4	114951-0-01
5/32 inch (3.96 mm)	a-2-1	155455-0-01	a-2-2	150843-0-01	a-2-3	150850-0-01	a-2-4	116509-0-01
3/16 inch (4.76 mm)	a-3-1	155457-0-01	a-3-2	150844-0-01	a-3-3	117133-0-01	a-3-4	112659-0-01
1/4 inch (6.35 mm)	F-11	155453-0-01	C-3	150830-0-01	A-34	117367-0-01	F-62	112660-0-01
5/16 inch (7.93 mm)	a-4-1	155459-0-01	a-4-2	150845-0-01	a-4-3	144882-0-01	a-4-4	112661-0-01
3/8 inch (9.52 mm)	a-5-1	155461-0-01	a-5-2	150846-0-01	a-5-3	144881-0-01	a-5-4	116510-1-01

From the library of: Diamond Needle Corp.